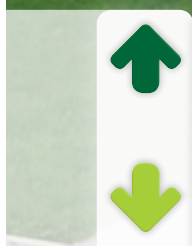


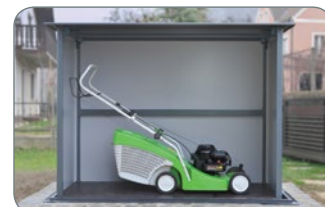
HIDEOUT

## TIDY ENVIRONMENT WITH NO VISIBLE WASTE CONTAINERS



### DUKINOUTDOOR

*Embellish the space around your house, business premises or tourist facilities and choose a unique solution, with which you make waste bins invisible.*



## MODERN WASTE CONTAINERS, INSTALLED UNDERGROUND

The **HIDEOUT** product provides a unique solution, which **beautifies your surroundings** and **prevents uncontrolled access** to the waste containers. The waste bins are installed underground, the opening of the containers can also be secured and thus prevent the unwanted depositing of waste. In addition to aesthetics, a very important feature of the Hideout product is that, due to the method of installation, **the spread of odours and stench is prevented**. Lifting the containers is fully automated and controlled via a remote control or switch. The special advantage of the Hideout solution is that it is **installed using your existing containers for waste**.

## 7 REASONS TO CHOOSE THE HIDEOUT PRODUCT

- Aesthetic appearance of surroundings without waste bins,
- prevention of the spread of stench and unwanted odours,
- prevention of uncontrolled access to waste containers,
- simplification of waste management,
- optimal use of outdoor areas, e.g. driveway or patio,
- in installation, your existing waste containers are used,
- automatic lifting of containers via remote control.

## TECHNICAL SPECIFICATIONS

	Supply voltage / Power consumption	Internal dimension W x H x D [mm]	Capacity (of the waste bin)
<b>HIDEOUT 101</b>	230V / 1500 W or 380 V / 750 W	1690 x 1320 x 740	3 x 120L 2 x 120L + 1x240L